



Debut PRO S Balanced

Debut PRO B with 10" S-shape tonearm

MSRP 1.099 € (incl. VAT)

Satin: ●

- **NEW** designed built-in output box
- **NEW** balanced mini XLR output
- Pre-adjusted Pick it S2 C cartridge
- 10" S-shape aluminium tonearm
- Aluminium sub-platter
- Fully adjustable VTA
- Precision aluminium platter with TPE damping
- TPE motor suspension
- Height-adjustable metal feet
- Electronic speed switch
- 8x hand-painted MDF chassis
- Premium semi-symmetrical phono cable
- Gold plated RCA connectors
- Record Puck E included
- Dust cover included
- Handmade in Europe

Speed: 33, 45/(78) (electronic speed change)

Drive principle: belt drive with electronic speed control

Platter: 300mm, die cast aluminium platter with TPE damping and felt mat

Platter bearing: high precision stainless steel axle in bronze bushing

Wow & flutter: 33: +/-0,16%; 45: +/-0,14%

Speed drift: 33: +/-0,40%; 45: +/-0,50%

Signal to noise: 68dB

Tonearm: 10" S-shape aluminium; SME connector

Effective arm length/mass: 254 mm / 8 g

Overhang: 16mm

Included accessories: 15VDC/0,8A power supply, dust cover, 78RPM belt, 7" single adapter, Record Puck E

Power consumption: 4W / 0W standby

Dimensions: 462 x 145 x 345mm (WxHxD)

Weight: 7 kg net



A perfect shape

Our new Debut PRO S Balanced continues our PRO series turntables with style. We followed our philosophy and designed a turntable which nurtures conscious music listening. The Debut PRO S Balanced takes this philosophy to the extreme. The manual controls invite the listener to interact with the turntable. The musical reward follows the tactile experience. No unnecessary switches, LEDs or labeling distract from the essential.



Our new s-shaped 10" aluminium tonearm with the PRO typical full aluminium precision CNC milled bearing gives you new possibilities. If you want to use different cartridges on your turntable our Debut PRO S Balanced with SME connector has got you covered. As the tonearm is fully adjustable you can dig even deeper and experiment with the turntable's sound. There are no limits!

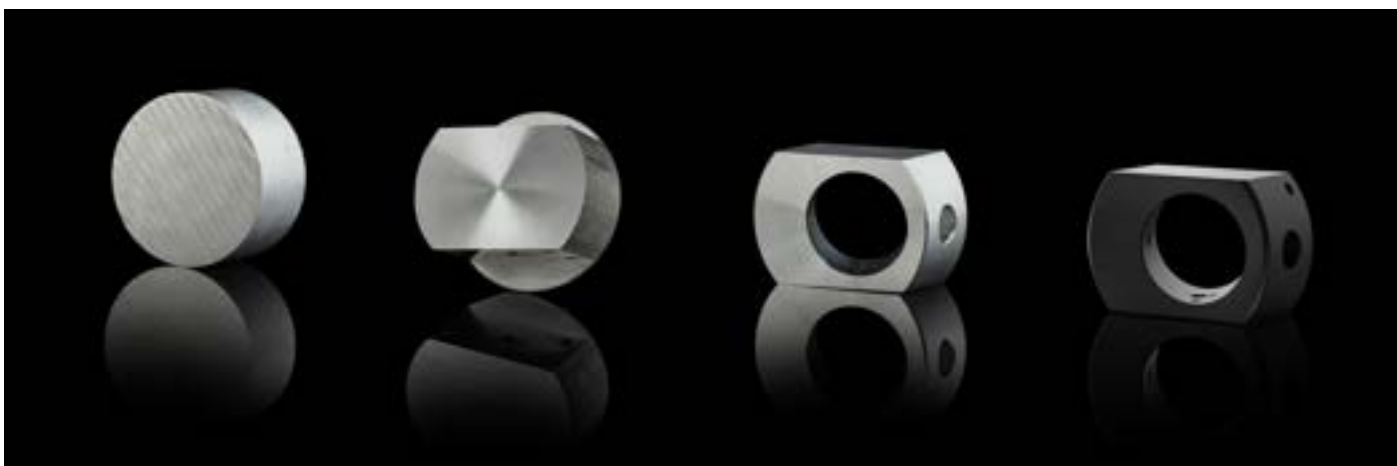
Our new Debut PRO S Balanced is handmade in Europe with highest quality materials. Its all black satin handpainted parts make this turntable an eyecatcher in every livingroom.

CNC'd aluminium metal parts

Take a closer look on our new Debut PRO S Balanced. You won't find any hollow spaces or plastic parts. We only use high quality aluminium parts to ensure the best possible sound quality.

The precision CNC milled parts are optically perfectly coordinated and lead the Debut PRO S Balanced to its modern simple and unprecedented design.

The satin black painting of the aluminum components results in a beautiful outstanding finish.



10" Aluminium S-Shape Tonearm

This aluminium tonearm ensures excellent damping and the 10" length enables perfect tracking of the record groove with minimal tracking error especially towards the inner grooves.

Compared to a straight tonearm, the S-shape will increase the effective mass of the tonearm, which is great when wanting to upgrade to heavier MC cartridges.



Adjustable VTA & Azimuth

With the new tonearm of the Debut PRO S Balanced, both the azimuth and the vertical tracking angle (VTA) can be set. The tonearm height can be continuously adjusted by loosening the two grub screws.

These settings of the Debut PRO S Balanced give you the option of adapting the tonearm to height changes, allowing the use of different turntable mats or other cartridges to always achieve the best



Always the perfect speed

The speed, electronically controlled with precision, guarantees the most accurate and stable speeds. Change between speeds easily with the toggle switch. With the supplied round belt for 78 rpm, you can also listen to your shellac records.

Together with the diamond cut aluminium sub-platter we can ensure a perfect overall speed accuracy. It also adds more mass to the entire platter and drive system, resulting in additional damping of noise and unwanted resonances.



Dampened die-cast alu platter

The die-cast aluminum platter gets reworked and precision balanced in an extra step to obtain a perfect platter.

The heavy aluminum platter has a ring made of TPE (thermoplastic elastomer) on the inside that helps to dampen all resonances and thus minimize wow and flutter.



High quality phono cable

A cable needs to ensure that every detail and information of the signal is transmitted to the dedicated receiving device. Using a poor cable can limit your whole HiFi setup.

The included Connect it Phono E RCA is a high quality phono optimized cable. We focused on quality core materials like a copper conductor for a signal transmission without losses.

Upgrade to TRUE BALANCED

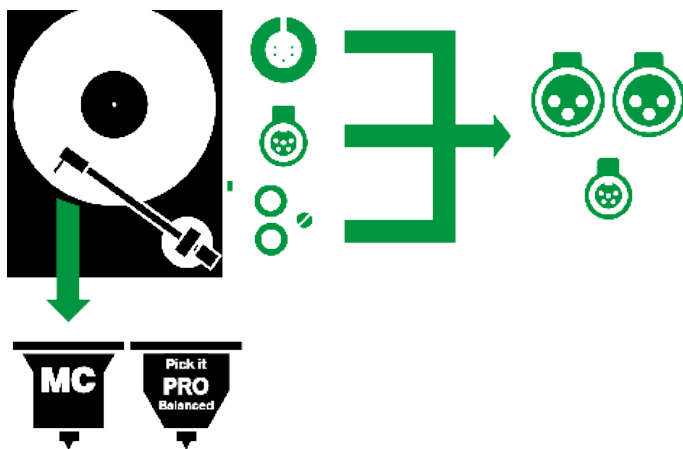
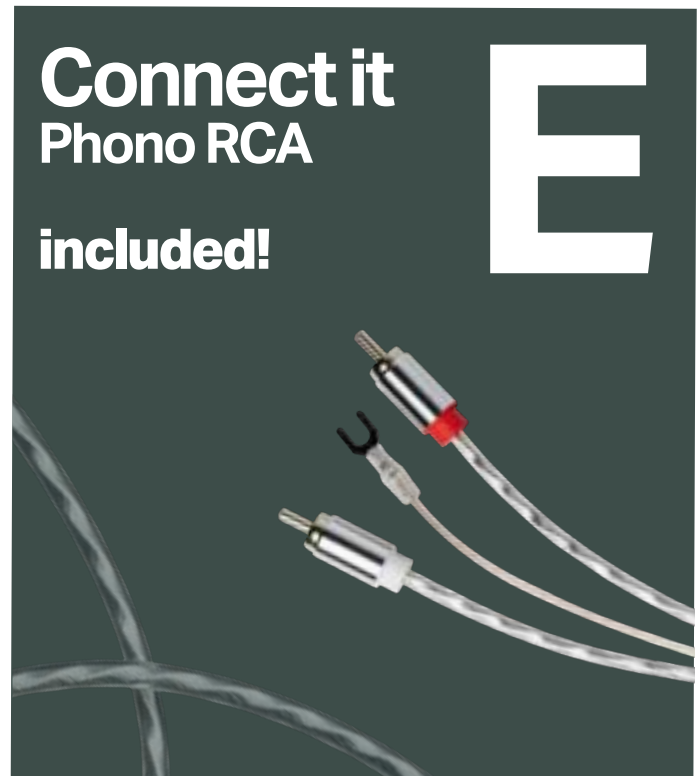


Use it in balanced configuration to ignite the full potential!

Get your True Balanced cable now!

Contact your dealer for more information or go to:

www.project-audio.com/connect-it-cables



Phono Box S3 B



Phono Box DS3 B

The True Balanced Technology

Phono signals are 1000 times smaller in voltage than regular CD, streaming or line level signals. This is why you need a phono preamplifier for your turntable, to amplify the signal and make it usable by your „normal“ amplifier.

Nowadays, many electromagnetic fields interfere with turntables. The causes are wireless networks and numerous electronic devices in the modern home. The RCA cable between your turntable and your amplifier is prone to picking up noise on the way. This so-called “electrosmog” can interfere with the tiny phono signal and add noise to your music.

Balanced audio connections are standard among professional musicians, recording studios, and for live concerts. It is essential to have a stable & interference-free connection as these signals, especially microphone signals, will be highly amplified.

The same applies to the connection from your turntable to the phono preamplifier. The significant advantage of a balanced connection is its ability to suppress picked up noise and interferences.

**To use our True Balanced Connection, your Debut PRO S Balanced needs to be equipped with an MC cartridge or Pick it PRO Balanced.*

Sophisticated DC/AC power generator

In all our turntables, we use a “cheap looking” switch mode power supply. We do this, as we use a precision DC-driven AC generator inside the turntable, which powers the motor.

With this we create a completely clean new sine wave. This guarantees very clean power which results in less motor vibrations and therefore a more accurate sound reproduction.



The upgrade for your phono setup

A clean and stable power is necessary for your phono setup. The included power supply is already a good base, but we want to go further.

The **Power Box S3 Phono** provides power for the Debut PRO S Balanced and also a Pro-Ject phono preamp. Its two outputs are specifically engineered to power Pro-Ject turntables and phono preamps.

The sophisticated DC filtration can have a dramatic impact on the sound quality.

In addition to the sound improvements, Power Box S3 Phono also offers its users a cleaner cable solution, avoiding PSU and cable mess.

